



Frontier

Community Services

Supporting Choices and Opportunities for
Individuals with Disabilities and their Families

Since 1981

FCS Board of Directors

Alaskans share a vision of a flexible system in which each person directs their own supports, based on their strengths and abilities, toward a meaningful life in their home, their job, and their community. Our vision includes supported families, professional staff, and services available throughout the state now and into the future.



David Carey
Board President



Carl Bauman
Vice President



Junie Steinbeck
Treasurer and
Secretary



Jeremy Day
Board Member



Vicki Leach
Board member



Michelle Davidson
Board Member



Board Member
Vacant Positions



Amanda Elder M.Ed.

Executive Director
Care Coordinator-TEFRA
afaulkner@fcsonline.org

FCS Leadership



Laura Barrows, M.Ed

Connections and Learning
Director
lbarrows@fcsonline.org



Barbara Crow

Shared Living Director
bcrow@fcsonline.org



Isaac Cryer

Community & Integration
Director
icryer@fcsonline.org

FCS Leadership Philosophy

When embracing the balance of heart and mind to serve, answering the call to lead, building the momentum to empower others, and summoning the courage to engage and collaborate with integrity, we soar as LEADERS!



Chriss Erwin

Human Resources Director
cerwin@fcsonline.org



Travis Dossier

Finance Director
tdossier@fcsonline.org



A.S.M. Wilcox

Integrity & Operations Director
awilcox@fcsonline.org

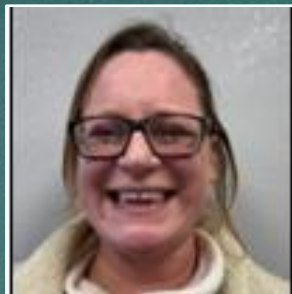
Connections and Learning



Laura Barrows, M.Ed
Connections and
Learning
Director



Brittany Taylor B.S.
Assistant Director
Children
btaylor@fcsonline.org



Libby Davis
Seniors Assistant
Director
ldavis@fcsonline.org



Open Position
DSPA and CLC
Assistant Director



Xavia Feik
Connections and
Learning Assistant,
Backup Care Coordinator
xfeik@fcsonline.org



Megan Wohlers
FASD Family Navigator
mwohlers@fcsonline.org



Direct Support Professionals

WAIVER SERVICES

- Community Waiver Service
- ~CCMC ~ISW
- ~ALI ~IDD
- ~APDD
- Direct Support Professionals
- Back-up Care Coordinator-TEFRA
- Frontline Supervisor DSPA
- Case Management CLC
- Supportive Decision Making
- NADSP Code of Ethics

SENIOR/ELDER SERVICES

- Adult Day Services/FMN
- Senior In-Home Services
- LifeLine

FASD

- Assessment & Diagnosis
- Education
- Physician
- Connection to Resources

INFANT LEARNING PROGRAM

- Intake/Referral/Resource Connection
- Home Visits
- Therapy OT/PT/SLP—Home

COMMUNITY EVENTS

- Community Connection events
- Community Awareness
- Community Education

Shared Living Services



Barbara Crow
Shared Living Director
bcrow@fcsonline.org



Direct Support Professionals

MEDICAL OVERSIGHT

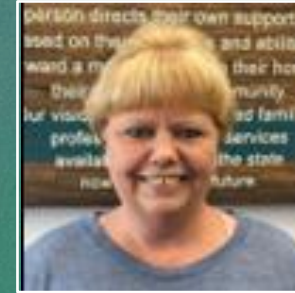
- Coordination of medical appts
- EMAR training
- Medication & Blood Borne Path training
- Medication QA & Delivery
- Durable Medical supplies coordination
- Wheelchair Q-Straint training
- MAR oversight
- Medication Delegation

QA and Scheduling

- ALH regulation
- Scheduling
- EHR Training
- Billing Verification
- GO scheduling
- DSP interviews

WAIVER SERVICES

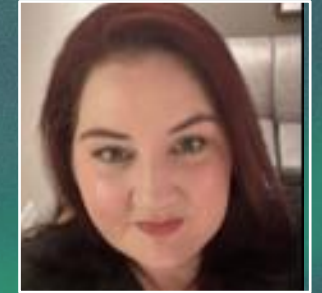
- Group Home Waiver Services
 - APDD
 - IDD
 - NOCM
 - CCMC
- Direct Support Professionals
- Frontline Supervisor DSPA
- 24/7 Services-Awake staff
- Case Management CLC
- Supportive Decision Making
- NADSP Code of Ethics



Debra Alexander
QA & Scheduling
Assistant Director
dalexander@fcsonline.org



Tamara Leach
Medical Compliance
Assistant Director
tleach@fcsonline.org



Mary Beck
Assistant Director-Waiver
mbeck@fcsonline.org



Mary Jaeger, RN
NOCM Nurse
mjaeger@fcsonline.org

Community and Integration



Isaac Cryer
Community & Integration
Director
icryer@fcsonline.org



Direct Support Professionals

RESPONSIBILITIES

- Employee Recruitment and Hiring
- Employee Benefits
- Employee Communications
- Justifications & Appeals
- Contracts & Vendors
- Onboarding and ongoing professional development trainings.
- Supports emotional wellness and workplace culture
- Community engagement through social media, advertising, and outreach.
- Agency at events to strengthen visibility and partnerships.



Nikki Marcano
Supported Employment
Program Coordinator
nmarcano@fcsonline.org



Bexx Geleide
DVR/SNAP E&T
Program Coordinator
bgeleide@fcsonline.org



Cindy Vasilie, MS,
CDCI,AMC-S
Behavioral Health Clinician



Annette Schultz
Recidivism Reduction
Case Manager
aschultz@fcsonline.org

Administration Finance and HR



Chriss Erwin
Human Resources
Director
cerwin@fcsonline.org



Dottie Herrick
Assistant HR Director
dherrick@fcsonline.org



Kyle Shassetz
Employee Relations
Assistant Director
kshassetz@fcsonline.org



Jacqueline Jacks
Community Connection and
Collaboration
Assistant Director
jjacks@fcsonline.org

RESPONSIBILITIES

- Employee Recruitment and Hiring
- Employee Benefits
- Employee Communications
- Justifications & Appeals
- Contracts & Vendors
- Onboarding and ongoing professional development trainings.
- Supports emotional wellness and workplace culture
- Community engagement through social media, advertising, and outreach.
- Agency at events to strengthen visibility and partnerships.

RESPONSIBILITIES

- Budget Development & Implementation
- Financial Analysis & Forecasting
- Accounting
- Payroll
- Accounts Payable
- Department Budget Consultation
- Banking & Investments
- Account Management
- Billing
- Recipient Fund Management
- Grant Reporting
- Travel Coordination
- Supply Tracking & Purchasing



Travis Dosser
Finance Director
tdosser@fcsonline.org



Jessica Mahan
Medicaid Biller
Billing Specialist Sup.
jmahan@fcsonline.org



Melanie Papp
Payroll Specialist
mpapp@fcsonline.org

Integrity and Operations



A.S.M. Wilcox

Integrity & Operations Director
awilcox@fcsonline.org



Liz Hooker

TEFRA Care Coordinator
And CC Liaison
ehooker@fcsonline.org



Alex McCaslin

Facility Coordinator
amccaslin@fcsonline.org



Amanda Thomassen

Operations
Assistant

RESPONSIBILITIES

- Medicaid Compliance
- Business Operations
- Technology & Equipment
- Facilities Maintenance
- Archiving
- Record Management
- EHR Management
- ALH Compliance
- TEFRA Care Coordination
- CC Liaison
- Janitorial Oversight
- Vehicle Management
- PQI Oversight
- Work with IT contractor
- Work with Maintenance Contractor
- Oversee MaintainX reporting system
- Front Desk Management



Susan Quinn

Executive Assistant
squinn@fcsonline.org